

BGX60

THE ONLY
TRENDS
ARE THE ONES
YOU DRAW.



BLUEGAME

PRESENTED
BY

ZARPO
YACHTING REFINED

FOR
BLUEGAMERS
ONLY.





THE ONLY
TRENDS
ARE THE ONES
WE DRAW.





LENGTH OVERALL (LOA)

19,02 m 62 ft 4 in

BEAM

5,30 m 17 ft 3 in

DRAFT @ FULL LOAD

1,42 m 4 ft 6 in

FUEL CAPACITY

3.000 l 792 gals

MAX SPEED

30 kn

CRUISE SPEED

27 kn



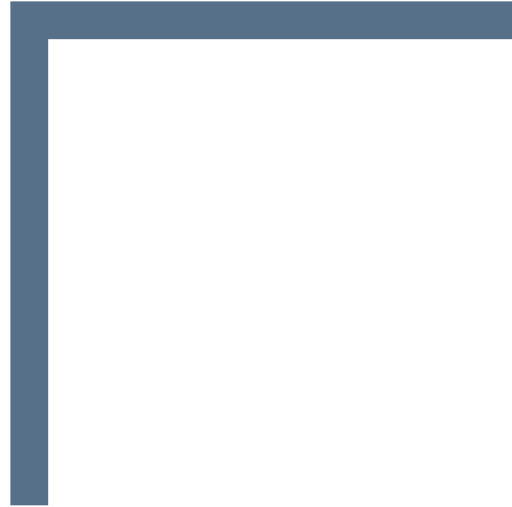
I'M A BRILLIANT
MULTI-PURPOSE
YACHT.

I escape every categorization
and cross multiple segments.



I promise high performance
and unmatched seaworthiness
and I always keep my promises.





THEY ALWAYS
DEFINE ME AS A
GROUNDBREAKING
POWER BOAT.

I embody the indomitable
BGX spirit through a distinctive
design combined with cutting-edge
technology and countless innovations.





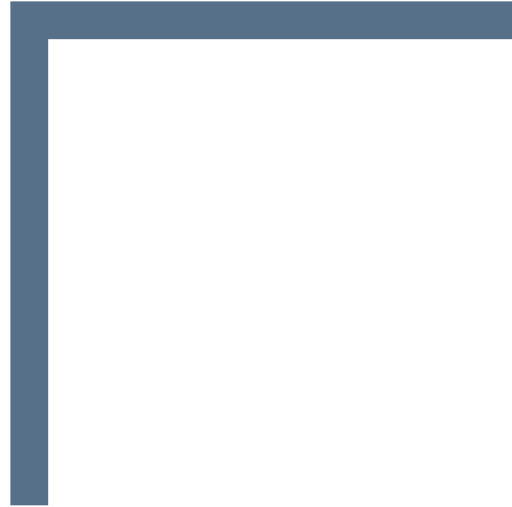
I'M
A UNIQUE PIECE,
HARD TO REPEAT.

I'm conceived for the Bluegamers
who chase a deep connection
with the sea.



Comfort and style abound,
I invite you to relax in the coolest setting.



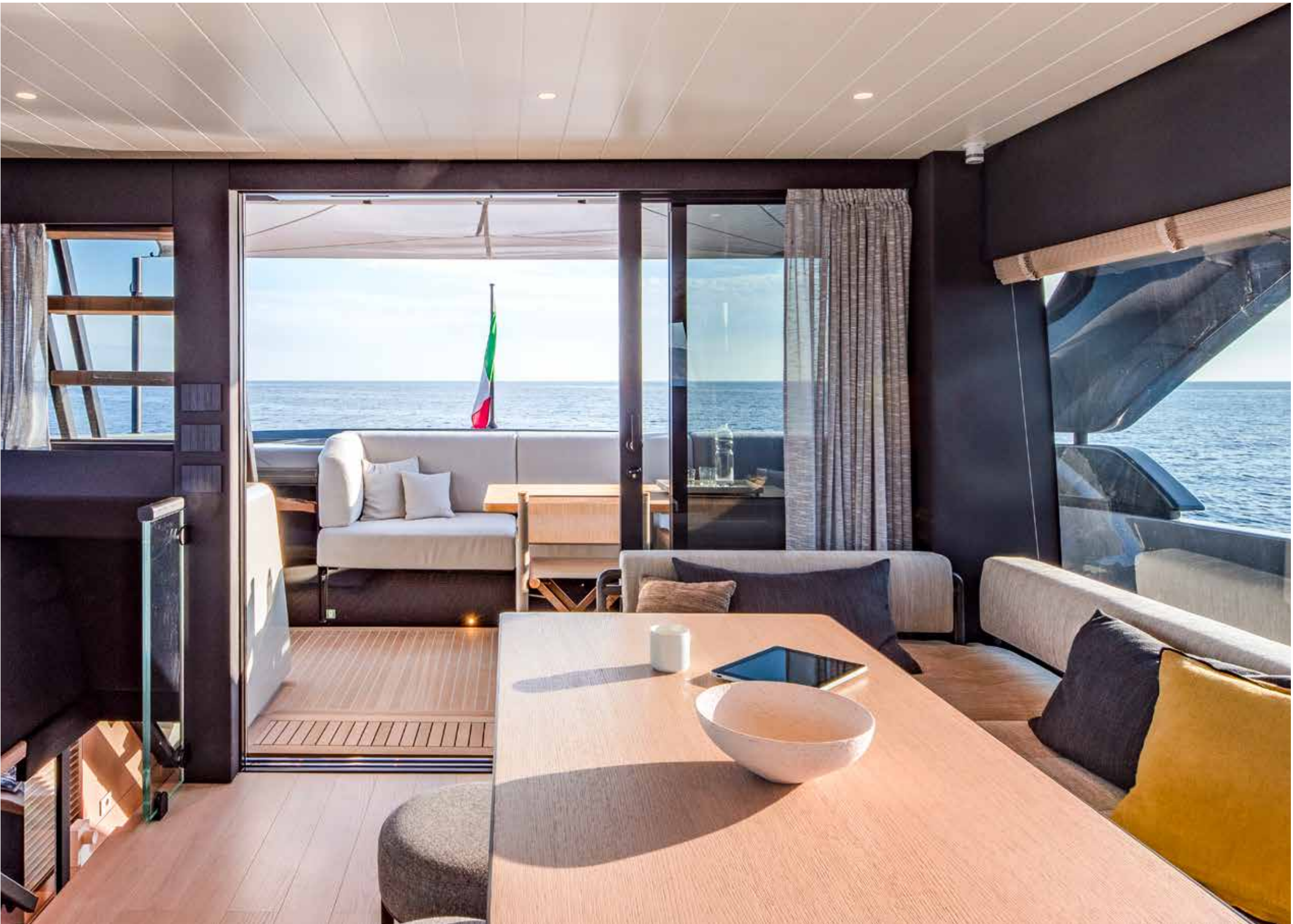


IN MY COMPANY
YOU'LL DISCOVER
A PROFOUND
CLOSENESS
WITH THE SEA.

Together we will experience
the infinite blue.







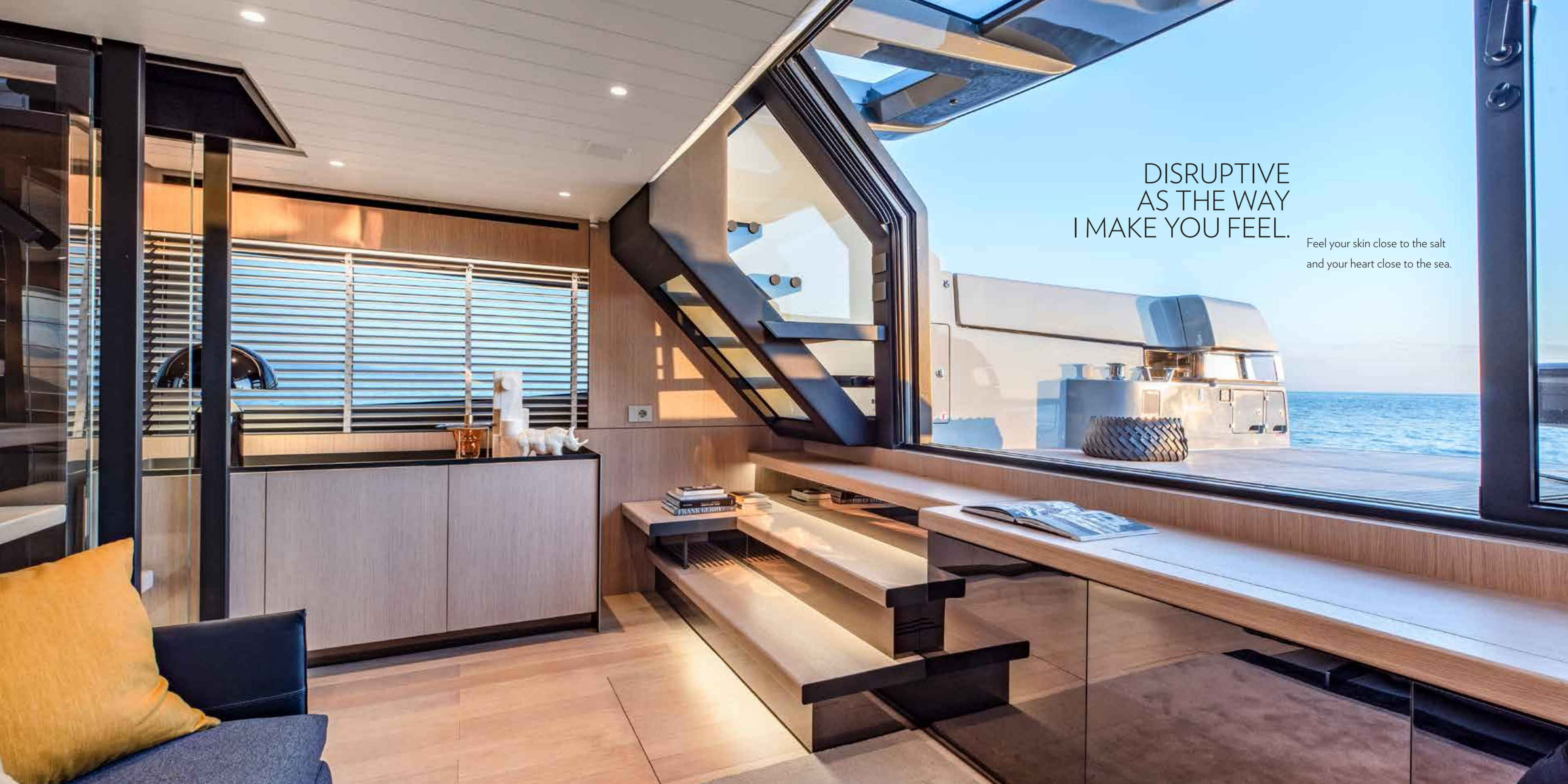
I'M USED TO
EXCEEDING ALL
EXPECTATIONS.

I demanded considerable effort
from my design team,
but it was worth it.



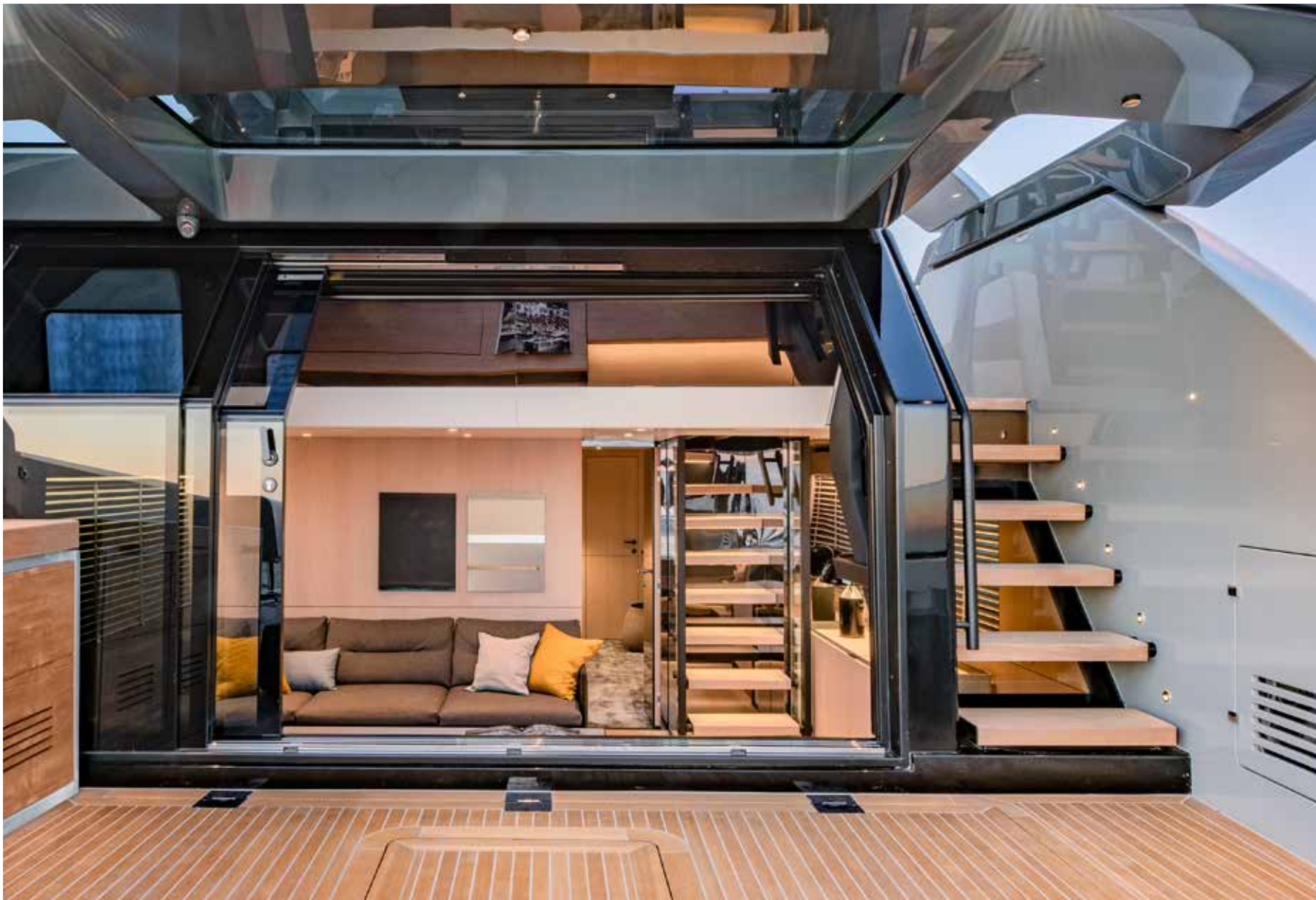
Inside or outside, you will “naturally” feel to be in the perfect place.



The image shows the interior of a modern yacht cabin. The space is characterized by light-colored wood paneling on the walls and ceiling. A large, multi-paned window on the right side offers a view of the ocean and another yacht. In the foreground, there is a wooden bench or seating area with a book resting on it. To the left, a cabinet with a dark countertop holds a small white figurine and a glass. A yellow cushion is visible in the bottom left corner. The overall atmosphere is bright and airy, with natural light streaming in from the windows.

DISRUPTIVE
AS THE WAY
I MAKE YOU FEEL.

Feel your skin close to the salt
and your heart close to the sea.



My outdoor and indoor living spaces
break with the known, meet
and open to each other seamlessly,
for a barrier-free immersive experience.







IT'S GETTING DARK.

Shall we discover the comfort and the smart design of my lower deck?



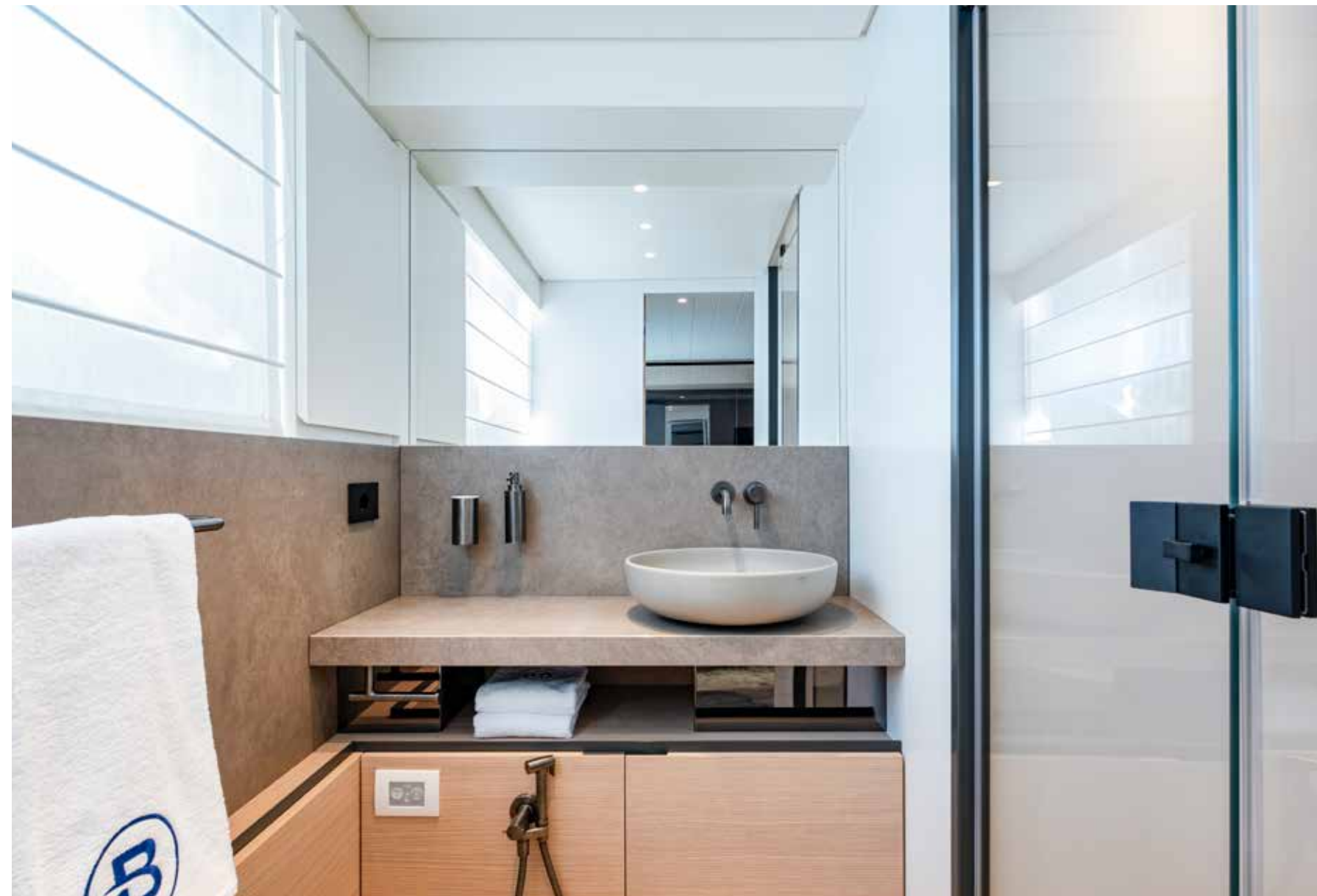
Smart, as my layout.
Innovative someone says.
My lower deck will be your reign.
From the owner's cabin,
through the living space, to the sea.





I'm designed to make you feel at home.
Here you will always find a warm
and relaxing atmosphere,
to enjoy every moment of life on board.





Functionality, comfort and livability.
I'll offer you an extremely flexible
onboard experience.




Wood and leather are present
in all my indoor spaces.
As in the guest room we're visiting now.
I'm made of natural materials to emphasize
contact with the sea, which appears
to enter gently inside me
to harmonize light and color.





M Y E Q U I P M E N T

The image features the text "M Y E Q U I P M E N T" centered horizontally. Below the text, there are three thin, light gray wavy lines that span the width of the page, creating a decorative, organic border at the bottom.



MAIN DECK



LOWER DECK B



LOWER DECK A



LOWER DECK C

ZUCCON

TECHNICAL SPECIFICATIONS

LENGTH OVERALL (LOA)	19,02 m 62 ft 4 in
CE CERTIFIED LENGTH (LH)	18,21 m 59 ft 7 in
BEAM	5,30 m 17 ft 3 in
DRAFT@ FULL LOAD	1,42 m 4 ft 6 in
ENGINES	2 x Volvo Penta IPS 1050 D13 / 2 x 588 kW / 800 HP STD 2 x Volvo Penta IPS 1200 D13 / 2 x 662 kW / 900 HP OPT
DISPLACEMENT DRY	35.000 kg +/-5% 77.761 lbs +/-5%
CONDITION*	
DEADRISE	16,5°
FUEL CAPACITY	3.000 792 gals
FRESH WATER CAPACITY	700 206 gals
GRAY WATER CAPACITY	330 87 gals
BLACK WATER CAPACITY	330 87 gals
MAX SPEED	28 kn +/-5% ** 30 kn +/- 5%
CRUISE SPEED	25 kn +/-5% ** 27 kn +/- 5%
MAX NO. PASSENGERS	14
BERTHS	4 (6 OPT) + 1 (2 OPT)
CLASS CERTIFICATION	CE cat. B
CONCEPT	Luca Santella
DESIGN	Luca Santella & Zuccon International Project
HULL DESIGN	Luis T. Codega

* The displacement data is calculated in accordance with the present specification.
** The data relating to the speed of the vessel refers to the OPT engines.



I TAKE THE GAME VERY SERIOUSLY.

I'm designed for long journeys.
I boast an extraordinary seaworthiness
and excellent performances at all times
of the day and night
and in all weather conditions,
in comfort and safety.





BLUE MARINE
FOUNDATION

THE RESPONSIBLE DEVELOPMENT OF BLUEGAME.

Responsible development is the driver of Bluegame's design decisions. As a Sanlorenzo brand, Bluegame contributes to the company's commitment to the logic of sustainability, in a continuous search for a combination of profound attention to design, a sophisticated high-tech approach and development carried out with respect for the environment and the society that surrounds it.

The responsible approach to the social and environmental sphere derives from the very nature of the group, shaped by various historical events, such as the unique link with local workers and the location of the headquarters and its construction sites within the Montemarcello nature reserve, precisely in Ameglia (SP), in an area of 135,000 square metres on the banks of the river Magra.

The construction site in Ameglia, due to the nature of its location, is covered by an Environmental Management System and a Health and Safety at Work Management System certified according to ISO standards. This allows Bluegame to operate by guaranteeing its employees the best working conditions

and compliance with current regulations. The site is also powered by self-produced renewable energy through an almost total coverage of solar panels.

The company's commitment also translates into design choices that unite and elevate all Bluegame yachts. This is the reason for the decision to equip them with the most efficient propulsion systems currently available on the market, the Volvo IPS, capable of reducing consumption by over 20%. In addition to this, there is the choice to use advanced materials and technologies that guarantee lightweight construction with reduced impact, such as carbon fibre, light wood for non-structural parts and the infusion lamination process for the hulls.

Particular attention has been paid to the energy efficiency of the product, with all Bluegame models designed to be covered with solar panels, which for some models can reach up to 30 square meters (56 panels). The models are also equipped with a grey and black water treatment system that allows them to be reused or discharged

overboard. Finally, the highly efficient thermal break glazing, which can be fitted to all BG and BGX models, insulates the interior environment and considerably reduces the consumption of air conditioning.

Over the years, the company has also promoted a series of pilot projects that have led to important applications on board, such as the use of naturally tanned leather and experimentation with balsa and basalt, i.e. recycled and recyclable materials, for internal compartmentation.

The sensitivity to environmental protection has led Bluegame to become a member of the Blue Marine Foundation (BLUE), a charity dedicated to the protection of the sea through measures that include the creation of marine reserves, the restoration of vital habitats and the development of sustainable fishing models.

As a brand of Sanlorenzo, Bluegame contributes to the commitment to achieve the 17 Sustainable Development Goals presented in Agenda 2030, the United Nations program.



BLUEGAME

ZARPO
YACHTING REFINED

Polanco | Mexico City, Mexico | +52 55 2270 6061 | +52 55 5415 7974 | info@zarpoyachts.com |



