

BG72

THE
MISSING LINK
BETWEEN
YACHTING
AND SEA.



BLUEGAME

PRESENTED
BY

ZARPO
YACHTING REFINED

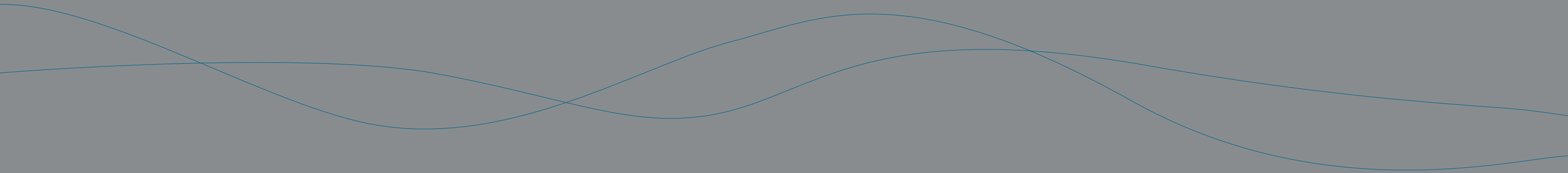
FOR
BLUEGAMERS
ONLY.



THE
MISSING LINK
BETWEEN
YACHTING
AND SEA.



I ' M S T U N N I N G







I'm the ultimate synthesis of the design vision
and the authenticity of living at sea.





MY IDENTITY IS SHAPED BY THE OCEAN.

My concept comes from the experience of an olympic sailing champion who has faced the oceans. That's why I feel so good in my vital environment.

I DON'T CARE
ABOUT LABELS.

Open or fly? I'm the perfect expression
of Bluegame's crossover soul, which escapes
from any categorization.







MY LAYOUT IS REVOLUTIONARY.

I'm the only open yacht with the outdoors areas arranged over three levels. You won't be able to choose your favorite place.



In my al fresco dining area you will be surrounded by your favorite element: the sea.





SUN AND FUN.

My entire walk around deck dedicated to outdoor life leaves you the choice to enjoy your private time, getting kissed by the sun or protected to read your favorite author.





*“IN FRONT
OF THE SEA
HAPPINESS
IS A SIMPLE
CONCEPT.”*

It's a quote from the writer
Jean-Claude Izzo,
but I could have written it.



TRY ME.

I inherited from the DNA of the BG range my easy maneuverability and my comfortable and safe navigation.

For the first time on an open yacht, I added a pilot cockpit with a 360° visibility, fully closable in adverse weather conditions or for your privacy in presence of the crew.







THE BRIGHTEST
SOLUTIONS
COME FROM
THE MOST DARING
COMBINATIONS.

If my upper deck offers the best of the BG's
open concept, my lower deck takes inspiration
from the disruptive BGX range.
The mix is just perfect.







CUSTOMIZE ME.

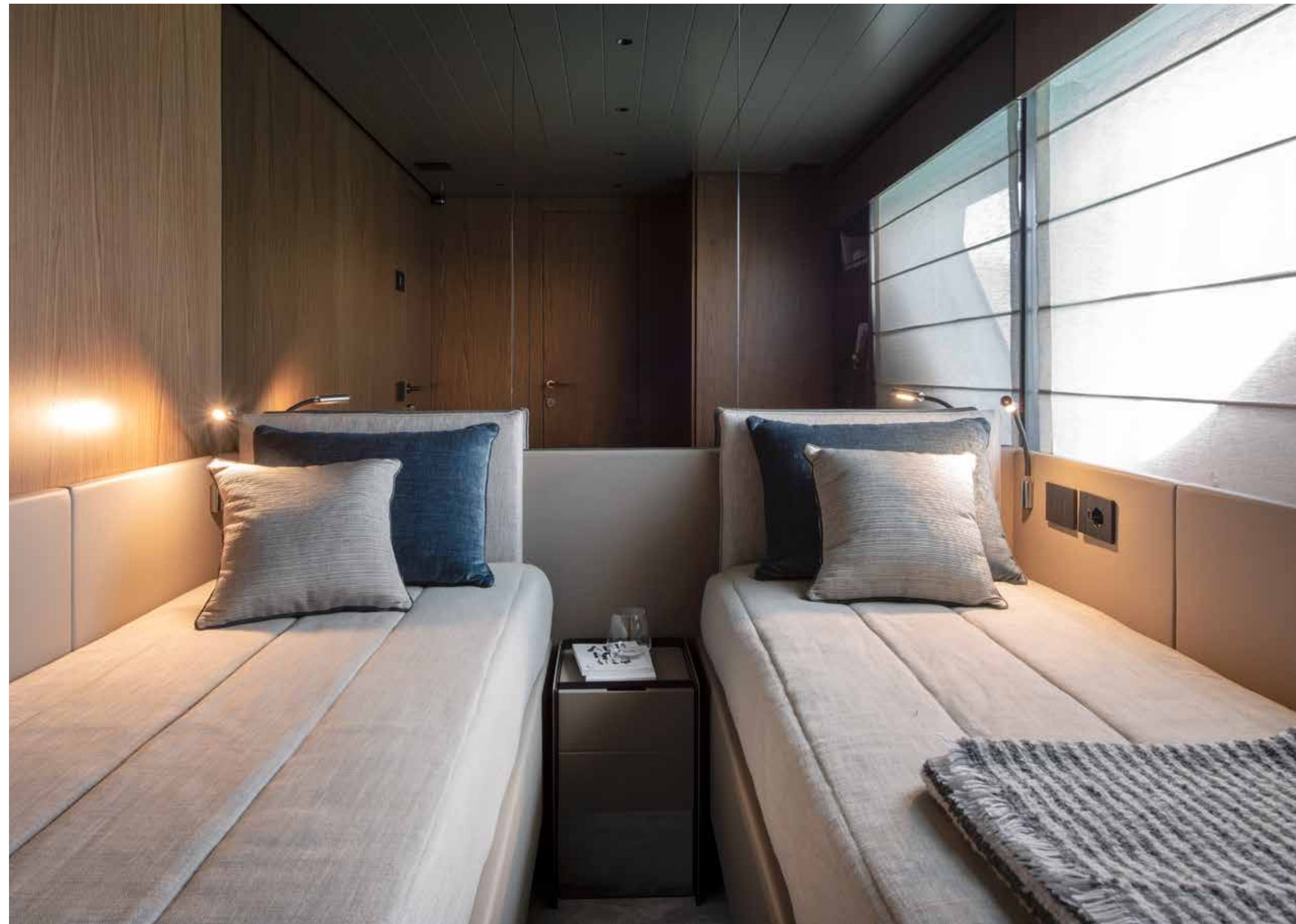
Whether you like living the boat in a more convivial or a more private way, I can be your perfect companion. Just ask my designers to arrange the perfect layout for you.





ENJOY MY ELEGANCE.

You can choose between double bed
or twin beds, according to your needs.
I will add the coolest elegance.





LENGTH OVERALL (LOA)
22.82 m 74 ft 9 in

BEAM
5.60 m 18 ft 3 in

DRAFT @ FULL LOAD
1.60 m 5 ft 2 in

FUEL CAPACITY
4.000 l 1.056 gals

MAX SPEED
30 kn

CRUISE SPEED
27 kn



WILD
AS AN OPEN.
WIDE
AS A FLY.

With me, the lovers of open
and flybridge are finally brought together.
Without compromises.




FORGET ME,
IF YOU CAN.

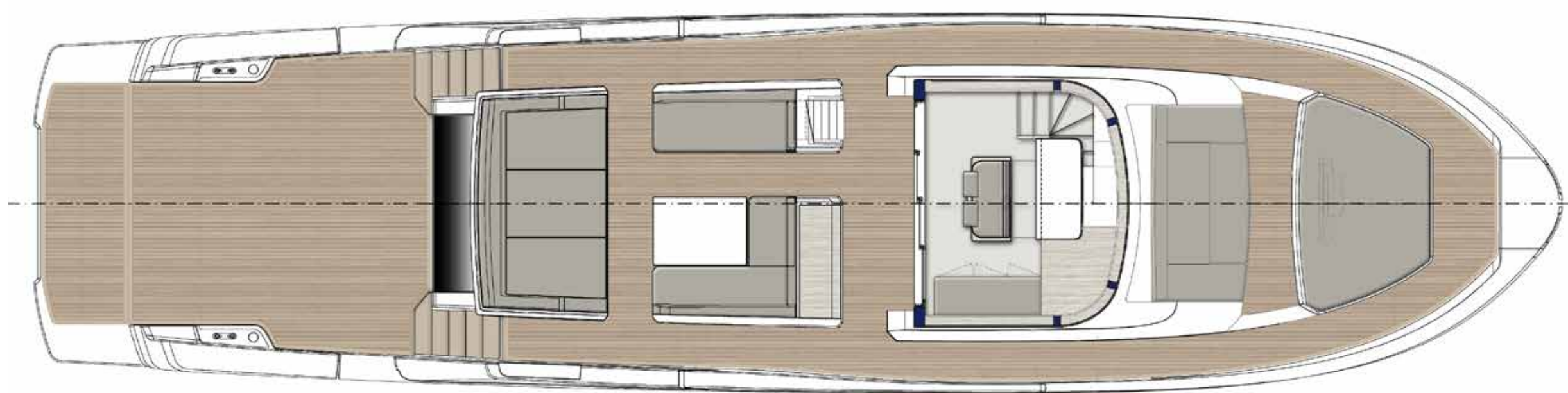
I'm profoundly different from all points
of view, day and night.
Genuinely disruptive, I will leave my mark.
Don't you believe it?
Come and surprise yourself.





M Y E Q U I P M E N T

The image features the text 'M Y E Q U I P M E N T' centered horizontally. Below the text, there are three thin, light gray wavy lines that span the width of the image, creating a decorative, organic border at the bottom.



MAIN DECK



LOWER DECK A



LOWER DECK B

21672

TECHNICAL SPECIFICATIONS

LENGTH OVERALL (LOA)	22,82 m / 74 ft 9 in
CE CERTIFIED LENGTH (LH)	21,15 m / 69 ft 4 in
BEAM	5,60 m / 18 ft 3 in
DRAFT@ FULL LOAD	1,60 m / 5 ft 2 in
ENGINES	2 x Volvo Penta IPS 1.200 D13 / 2 x 662 kW / 900 HP STD 2 x Volvo Penta IPS 1.350 D13 / 2 x 735 kW / 1.000 HP OPT
DISPLACEMENT DRY	40.000 kg +/- 5% / 88.100 lbs +/- 5%
CONDITION*	
DEADRISE	14°
FUEL CAPACITY	4.000 l / 1.056 gals
FRESH WATER CAPACITY	1.000 l / 264 gals
GRAY WATER CAPACITY	330 l / 87 gals
BLACK WATER CAPACITY	330 l / 87 gals
MAX SPEED	28 kn +/- 5% **30 kn +/- 5%
CRUISE SPEED	25 kn +/- 5% **27 kn +/- 5%
MAX NO. PASSENGERS	16
BERTHS	6+2
CLASS CERTIFICATION	CE cat. B
CONCEPT	Luca Santella
DESIGN	Luca Santella & Zuccon International Project
HULL DESIGN	Luis T. Codega

* The displacement data is calculated in accordance with the present specification.
** The data relating to the speed of the vessel refers to the OPT engines.



BLUE MARINE
FOUNDATION

THE RESPONSIBLE DEVELOPMENT OF BLUEGAME.

Responsible development is the driver of Bluegame's design decisions. As a Sanlorenzo brand, Bluegame contributes to the company's commitment to the logic of sustainability, in a continuous search for a combination of profound attention to design, a sophisticated high-tech approach and development carried out with respect for the environment and the society that surrounds it.

The responsible approach to the social and environmental sphere derives from the very nature of the group, shaped by various historical events, such as the unique link with local workers and the location of the headquarters and its construction sites within the Montemarcello nature reserve, precisely in Ameglia (SP), in an area of 135,000 square metres on the banks of the river Magra.

The construction site in Ameglia, due to the nature of its location, is covered by an Environmental Management System and a Health and Safety at Work Management System certified according to ISO standards. This allows Bluegame to operate by guaranteeing its employees the best working conditions

and compliance with current regulations. The site is also powered by self-produced renewable energy through an almost total coverage of solar panels.

The company's commitment also translates into design choices that unite and elevate all Bluegame yachts. This is the reason for the decision to equip them with the most efficient propulsion systems currently available on the market, the Volvo IPS, capable of reducing consumption by over 20%. In addition to this, there is the choice to use advanced materials and technologies that guarantee lightweight construction with reduced impact, such as carbon fibre, light wood for non-structural parts and the infusion lamination process for the hulls.

Particular attention has been paid to the energy efficiency of the product, with all Bluegame models designed to be covered with solar panels, which for some models can reach up to 30 square meters (56 panels). The models are also equipped with a grey and black water treatment system that allows them to be reused or discharged

overboard. Finally, the highly efficient thermal break glazing, which can be fitted to all BG and BGX models, insulates the interior environment and considerably reduces the consumption of air conditioning.

Over the years, the company has also promoted a series of pilot projects that have led to important applications on board, such as the use of naturally tanned leather and experimentation with balsa and basalt, i.e. recycled and recyclable materials, for internal compartmentation.

The sensitivity to environmental protection has led Bluegame to become a member of the Blue Marine Foundation (BLUE), a charity dedicated to the protection of the sea through measures that include the creation of marine reserves, the restoration of vital habitats and the development of sustainable fishing models.

As a brand of Sanlorenzo, Bluegame contributes to the commitment to achieve the 17 Sustainable Development Goals presented in Agenda 2030, the United Nations program.



BLUEGAME

ZARPO
YACHTING REFINED

Polanco | Mexico City, Mexico | +52 55 2270 6061 | +52 55 5415 7974 | info@zarpoyachts.com |



