

# BG54

SIZE DOESN'T MATTER.  
SPACE MATTERS.



# BLUEGAME

PRESENTED  
BY

ZARPO  
YACHTING REFINED

FOR  
**BLUEGAMERS**  
ONLY.





SIZE DOESN'T  
MATTER.  
SPACE MATTERS.







LENGTH OVERALL (LOA)  
16,57 m 54 ft 4 in

BEAM  
5 m 16 ft 4 in

DRAFT @ FULL LOAD  
1,34 m 4 ft 5 in

FUEL CAPACITY  
1.800 l 475 gals

MAX SPEED  
35 kn

CRUISE SPEED  
32 kn

## I'M ALWAYS A WAVE AHEAD.

I proudly belong to “generation 2.0” of the BG range; the same rebel spirit to conventions, same determination to convince the most experienced boaters, with a mix of head-turning design, striking spaces and unmatched performances. Much more than the simple evolution of the species.









DON'T BE  
NARROW-MINDED.

CHOOSE THE  
FULL OPENNESS.





## NEW SENSATIONS TO FEEL.

Feel free to prepare your favourite cocktail from the bar two steps away from the sea.

WITH ME,  
YOU'LL NEVER  
LOSE TOUCH  
WITH THE SEA.

My wide swimming platform is at your service  
for launching the dinghy or the toys,  
or just as a relaxing immersed area.







IN MY COCKPIT  
YOU CAN  
EXPERIENCE  
THE SEA AT 360°.





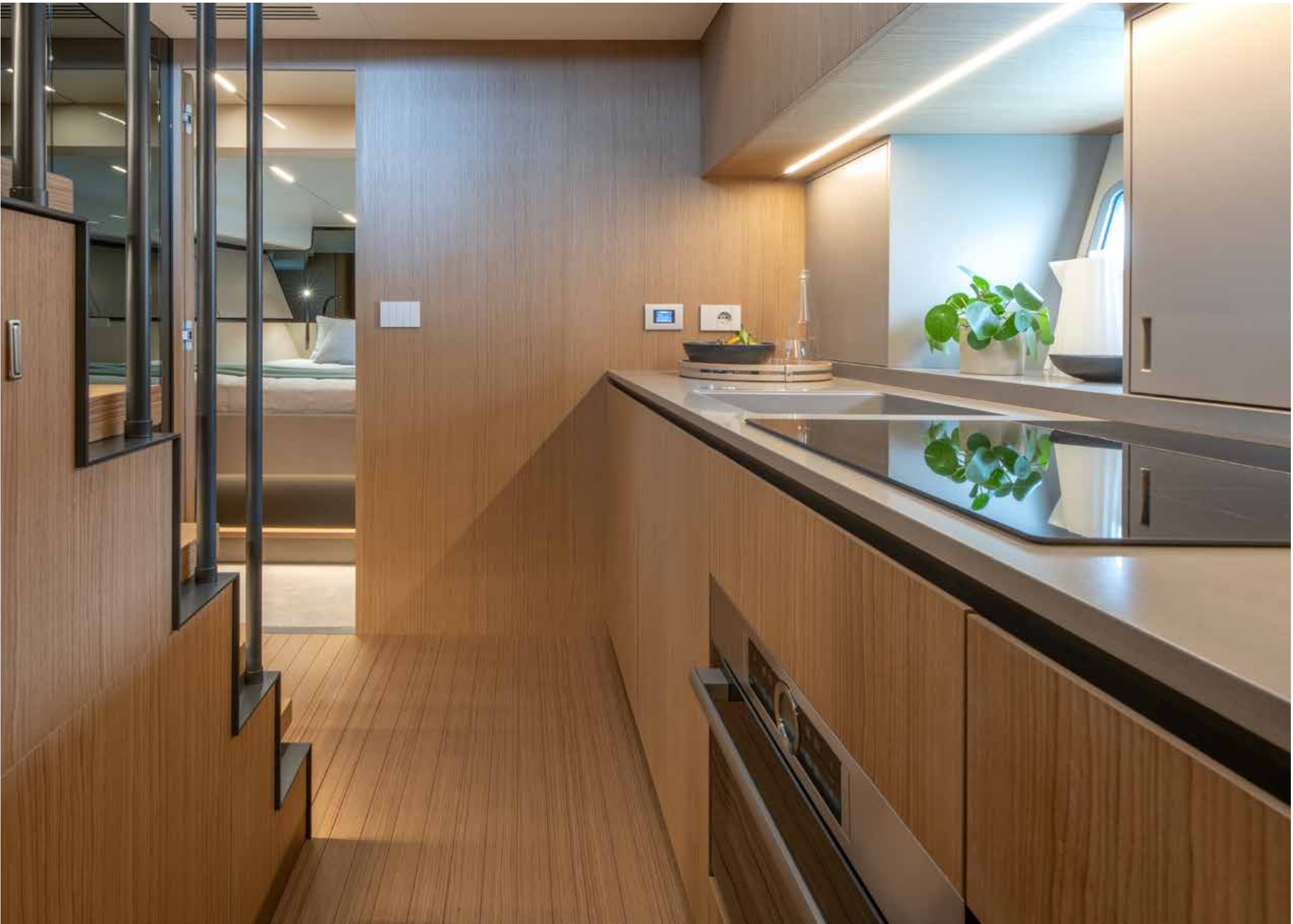
Grab my helm and take me  
to our next destination.



*“IN FRONT  
OF THE SEA  
HAPPINESS  
IS A SIMPLE  
CONCEPT.”*



It's a quote from the writer  
Jean-Claude Izzo,  
but I could have written it.



LOWER DECK.  
HIGHER  
POSSIBILITIES.

Choosing the compactness  
of Volvo IPS engines greatly  
amplifies the spaces below deck.



I ' M R E F I N E D

The image features a solid grey background. In the center, the text "I ' M R E F I N E D" is displayed in a light blue, all-caps, sans-serif font. Below the text, there are three thin, light blue wavy lines that span the width of the image, creating a decorative, flowing effect.



SPACE, SPACE,  
SPACE, SPACE.



Would you guess that these pictures  
are taken on an open yacht?  
Yet it's not an optical trick.  
Meet me and see with your own eyes.  
I'm the only open yacht of my category  
that can offer you a true  
full beam owner cabin.



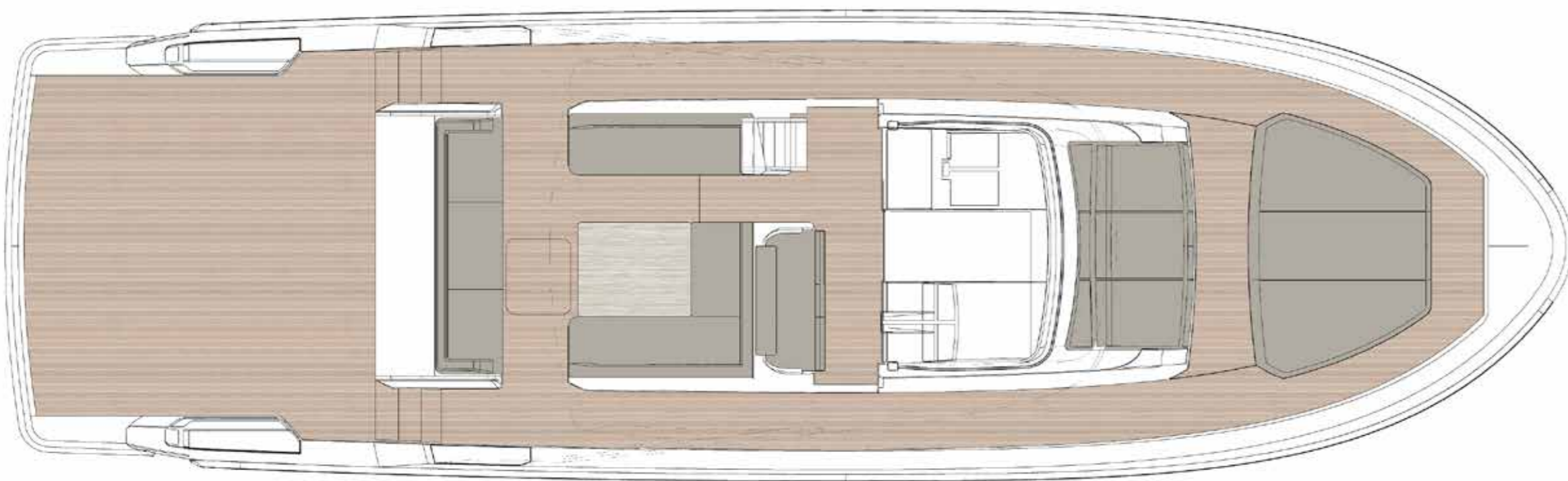
## MY LAYOUT IS SMART AND FLEXIBLE.

You can choose between two  
or three cabins proposals.  
Both boast one additional cabin  
for the crew.



M Y E Q U I P M E N T

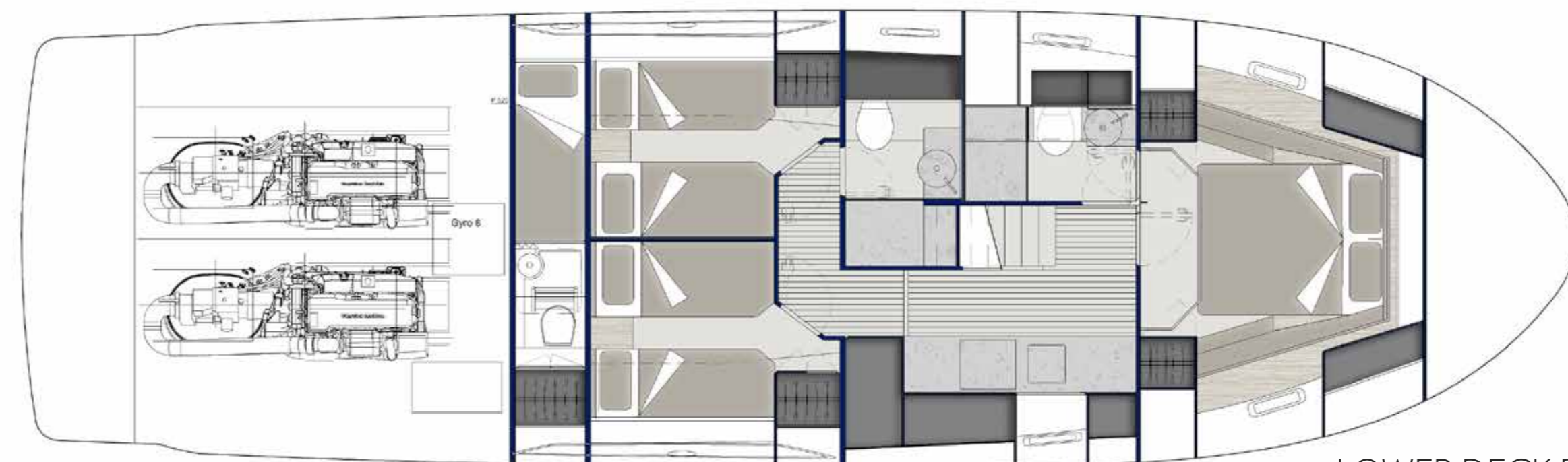




MAIN DECK



LOWER DECK A



LOWER DECK B

54  
54  
54  
54

## TECHNICAL SPECIFICATIONS

LENGTH OVERALL (LOA)	16,57 m 54 ft 4 in
CE CERTIFIED LENGTH (LH)	15,29 m 50 ft 2 in
BEAM	5 m 16 ft 4 in
DRAFT@ FULL LOAD	1,34 m 4 ft 5 in
ENGINES	2 x Volvo Penta IPS 800 D11 / 2 x 459 kW / 625 HP STD 2 x Volvo Penta IPS 950 D11 / 2 x 515 kW / 725 HP OPT
DISPLACEMENT DRY	20,25 t +/-5% 44,640 lbs +/-5%
CONDITION*	
DEADRISE	10,4°
FUEL CAPACITY	1.800   474 gals
FRESH WATER CAPACITY	500   132 gals
GRAY WATER CAPACITY	130   34 gals
BLACK WATER CAPACITY	130   34 gals
MAX SPEED	30 kn +/-5% ** 35 kn +/- 5%
CRUISE SPEED	27 kn +/-5% ** 32 kn +/- 5%
MAX NO. PASSENGERS	14
BERTHS	4 (6 OPT) + 1 OPT
CLASS CERTIFICATION	CE cat. "B"
CONCEPT	Luca Santella
DESIGN	Luca Santella & Zuccon International Project
HULL DESIGN	Luis T. Codega

\* The displacement data is calculated in accordance with the present specification.  
\*\* The data relating to the speed of the vessel refers to the OPT engines.



BLUE MARINE  
FOUNDATION

## THE RESPONSIBLE DEVELOPMENT OF BLUEGAME.

Responsible development is the driver of Bluegame's design decisions. As a Sanlorenzo brand, Bluegame contributes to the company's commitment to the logic of sustainability, in a continuous search for a combination of profound attention to design, a sophisticated high-tech approach and development carried out with respect for the environment and the society that surrounds it.

The responsible approach to the social and environmental sphere derives from the very nature of the group, shaped by various historical events, such as the unique link with local workers and the location of the headquarters and its construction sites within the Montemarcello nature reserve, precisely in Ameglia (SP), in an area of 135,000 square metres on the banks of the river Magra.

The construction site in Ameglia, due to the nature of its location, is covered by an Environmental Management System and a Health and Safety at Work Management System certified according to ISO standards. This allows Bluegame to operate by guaranteeing its employees the best working conditions

and compliance with current regulations. The site is also powered by self-produced renewable energy through an almost total coverage of solar panels.

The company's commitment also translates into design choices that unite and elevate all Bluegame yachts. This is the reason for the decision to equip them with the most efficient propulsion systems currently available on the market, the Volvo IPS, capable of reducing consumption by over 20%. In addition to this, there is the choice to use advanced materials and technologies that guarantee lightweight construction with reduced impact, such as carbon fibre, light wood for non-structural parts and the infusion lamination process for the hulls.

Particular attention has been paid to the energy efficiency of the product, with all Bluegame models designed to be covered with solar panels, which for some models can reach up to 30 square meters (56 panels). The models are also equipped with a grey and black water treatment system that allows them to be reused or discharged

overboard. Finally, the highly efficient thermal break glazing, which can be fitted to all BG and BGX models, insulates the interior environment and considerably reduces the consumption of air conditioning.

Over the years, the company has also promoted a series of pilot projects that have led to important applications on board, such as the use of naturally tanned leather and experimentation with balsa and basalt, i.e. recycled and recyclable materials, for internal compartmentation.

The sensitivity to environmental protection has led Bluegame to become a member of the Blue Marine Foundation (BLUE), a charity dedicated to the protection of the sea through measures that include the creation of marine reserves, the restoration of vital habitats and the development of sustainable fishing models.

As a brand of Sanlorenzo, Bluegame contributes to the commitment to achieve the 17 Sustainable Development Goals presented in Agenda 2030, the United Nations program.





**BLUEGAME**

**ZARPO**  
YACHTING REFINED

Polanco | Mexico City, Mexico | +52 55 2270 6061 | +52 55 5415 7974 | [info@zarpoyachts.com](mailto:info@zarpoyachts.com) |



