

T H E



INTRODUCED
BY

ZARPO
YACHTING REFINED



THE 9 - AS INDIVIDUAL AS YOU ARE

Our 9 is unique and so is every single one of them. Above all, she is as individual as our customers themselves, because her layout, decoration and features are completely customizable.

World-renowned designer Bill Tripp drew the lines of the 9, which is available in three exciting versions - Y9, Y9 Pilot House and Y9 Custom. What is your vision for a 9? Let's discuss.

Y

C

CUSTOM

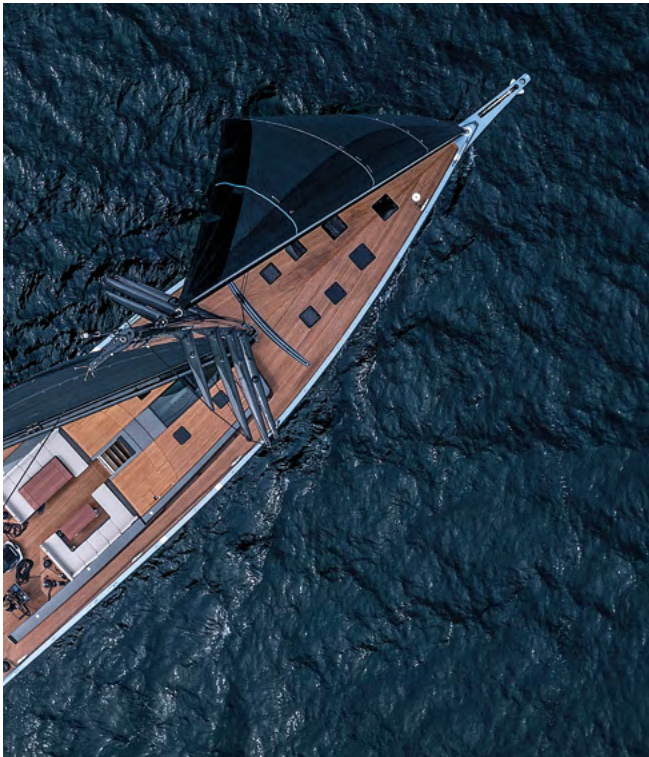
TRIPP 90



USA
61400

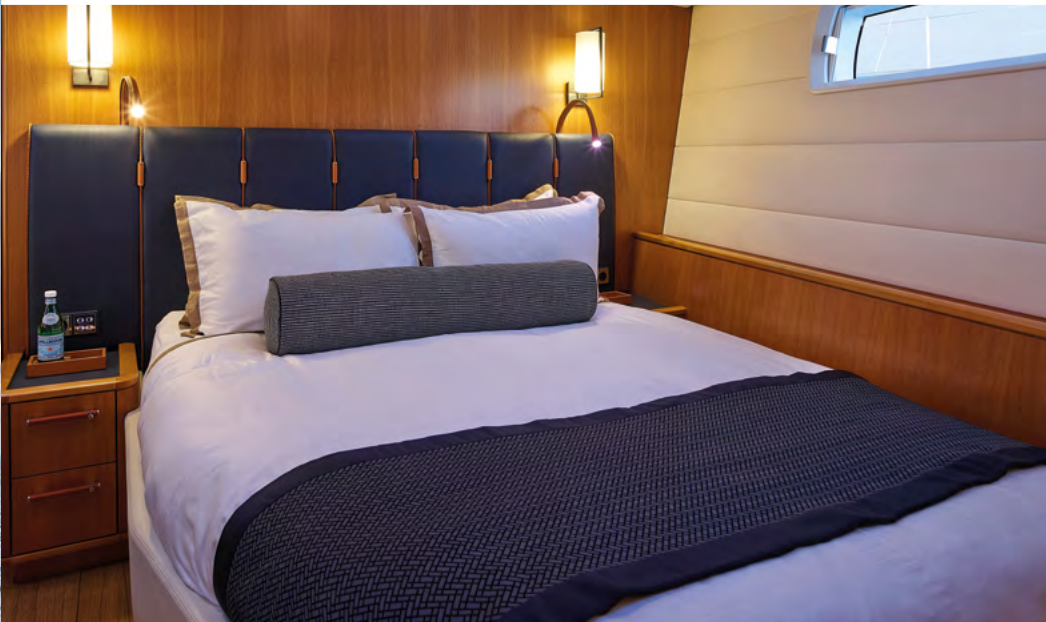
FUSION BETWEEN ELEGANCE
AND TECHNOLOGY /





YC - TRIPP 90

This version of the 9 started with a white piece of paper. We implemented a design that has never existed before – the owner received a full custom yacht. The Tripp 90 is extremely handle and easy to sail even with a reduced crew and in light winds.

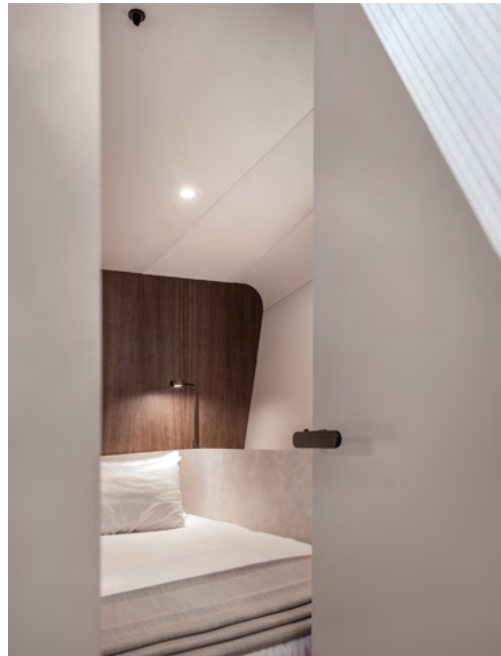


The interior of the Tripp 90 was designed by Andrew Winch. Drawing stylistic inspiration from the U.S. East Coast and mid-century Scandinavian influences, as well as soft leather and light oak wood, the ambiance exudes understated elegance.



IMMEASURABLE JOY FOR OWNER,
FAMILY AND FRIENDS /





Y9

Huge interior spaces and a cutting-edge look characterize our Y9. She combines blue water reliability with fast cruising enjoyment. A large cockpit and a foldable beachclub ensure a private atmosphere while being close to the water.

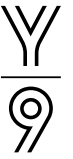


Of course, the Y9 can also prove her potential on regatta courses in the Mediterranean or the Caribbean and sail right at the front of the field. She will be a formidable opponent in any race.



Y9

Make the Y9 yours only and get inspired by the interior design proposal of the award-winning studio Norm Architects from Copenhagen. Our inhouse design team will coordinate any other wishes you might have in terms of styling, layout and decoration.



The Y9 impresses with her spaciousness, her Scandinavian look and her warm color tones. She is a luxurious retreat to get away from the constant stimulation our everyday lives bring.





... .. VERY RELIABLE /



Y9 PILOT HOUSE

The Y9 Pilot House features a striking deckhouse that offers a very bright salon and phenomenal views at the sea. Under sail the yacht offers very good sailing performance, like any YYacht, due to her lightweight construction and her carbon rig.



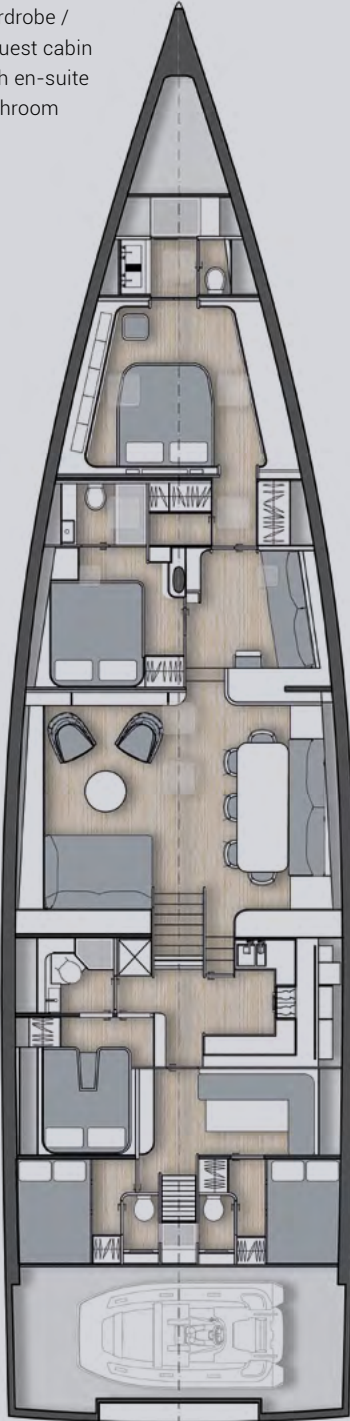
The layout of the Y9 Pilot House is optimized for families and friends. Andrew Winch and his experienced team designed a sophisticated atmosphere below deck. Of course, you can implement your individual ideas.

OUR LAYOUTS

Choose the one which perfectly suits you

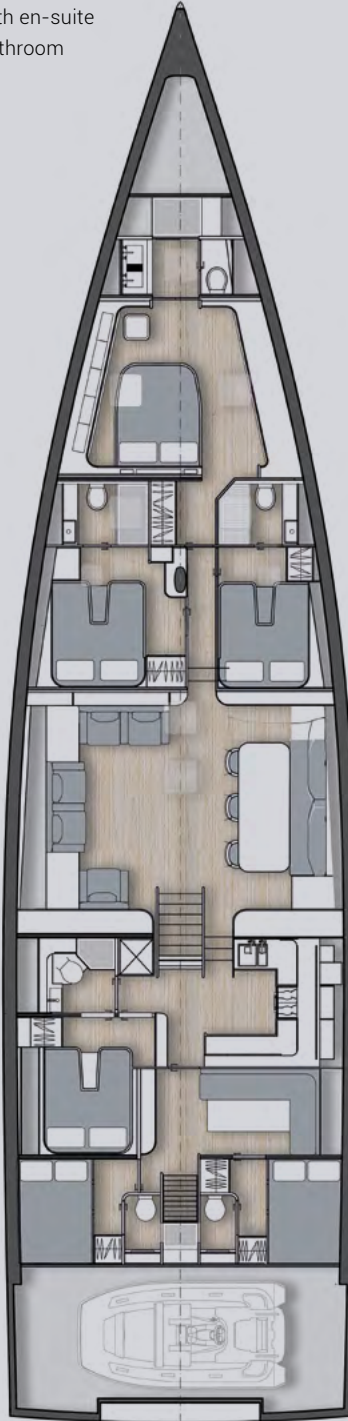
OPTION 1

Frwd owner area with en-suite bathroom and walk-in wardrobe / 2 guest cabin with en-suite bathroom



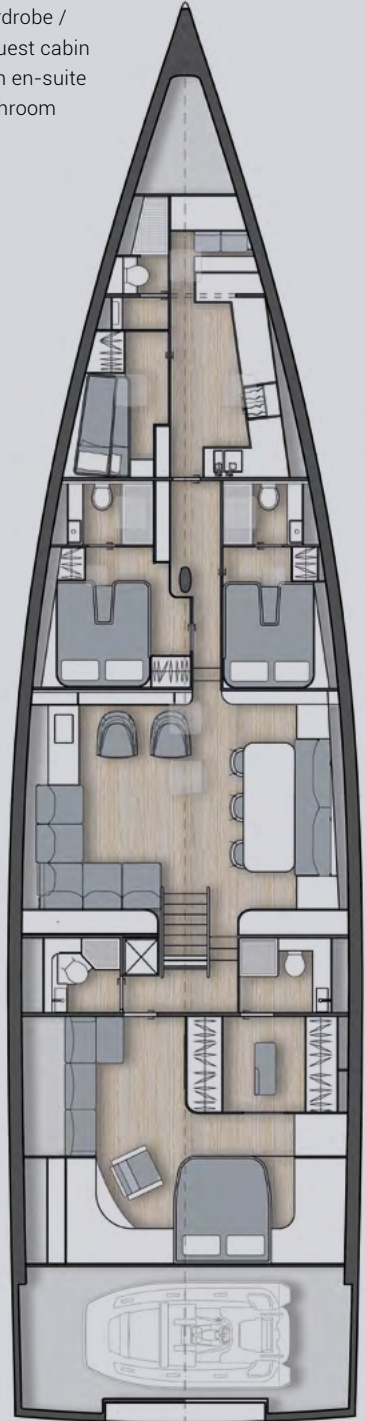
OPTION 2

Frwd owner area with en-suite bathroom / 3 guest cabin with en-suite bathroom



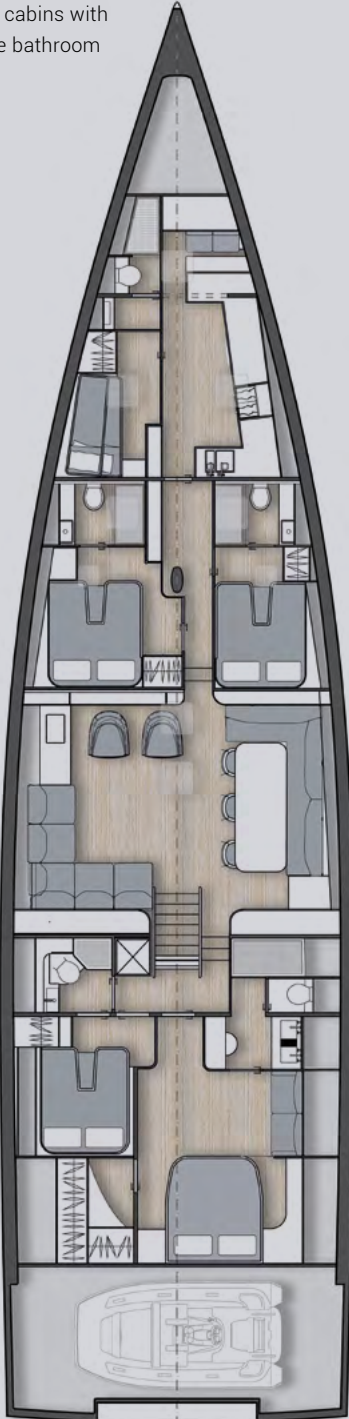
OPTION 3

Aft owner area with en-suite bathroom and walk-in wardrobe / 2 guest cabin with en-suite bathroom



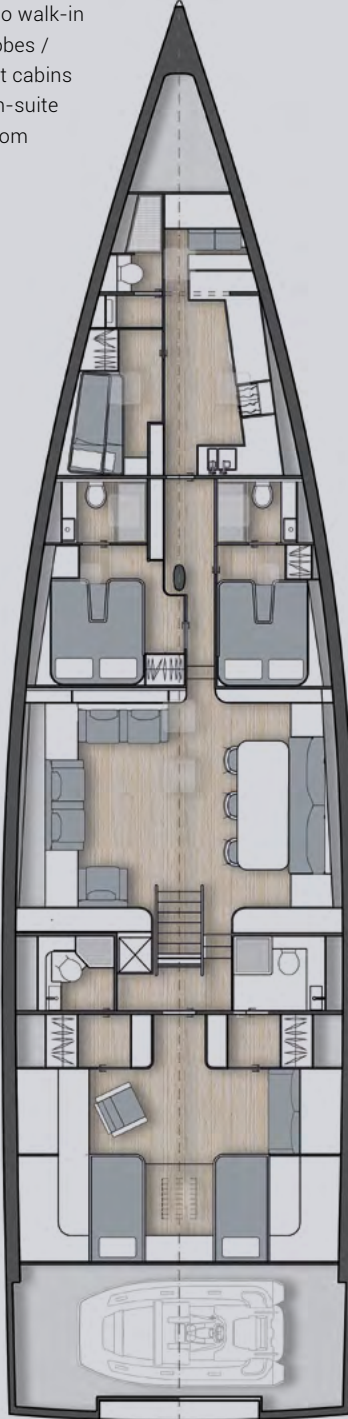
OPTION 4

Aft owner area with en-suite bathroom and walk-in wardrobe / 3 guest cabins with en-suite bathroom



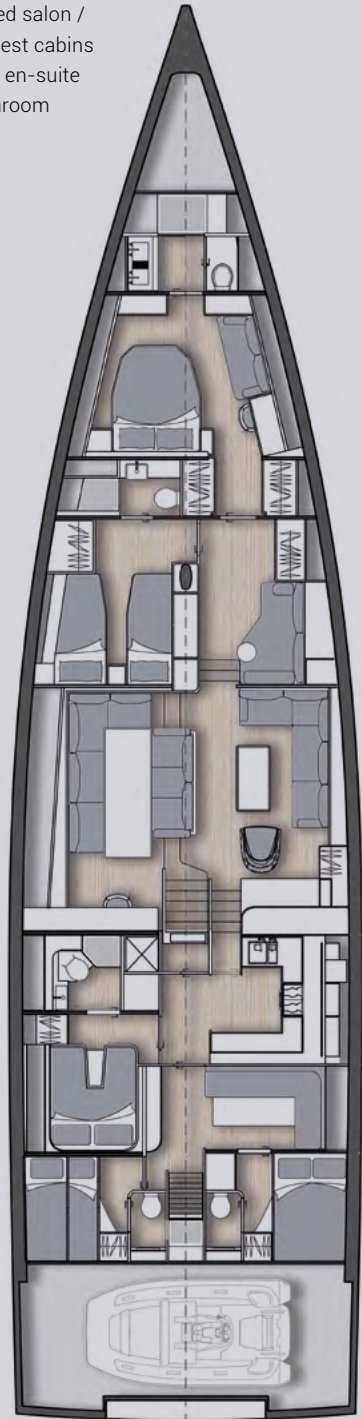
OPTION 5

Aft owner area with two single beds, two en-suite bathrooms and two walk-in wardrobes / 2 guest cabins with en-suite bathroom



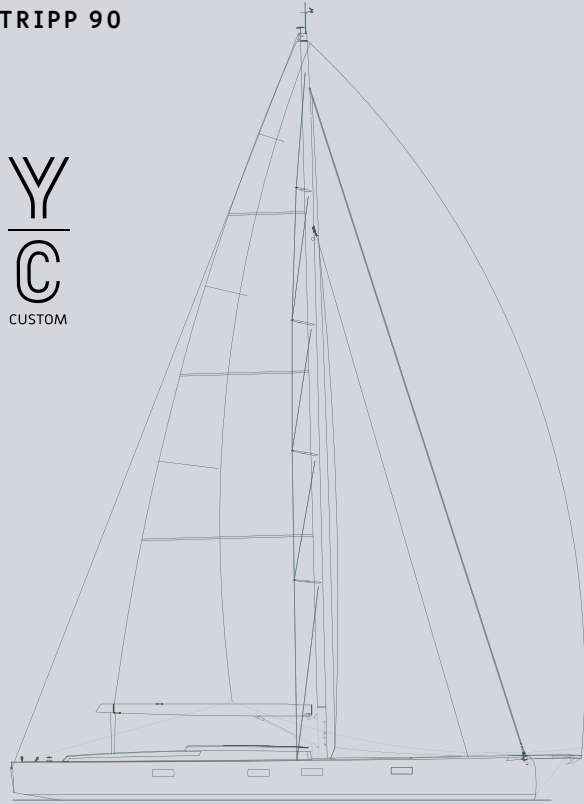
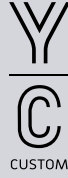
OPTION 6

Frwd owner area with en-suite bathroom and walk-in wardrobe / raised salon / 2 guest cabins with en-suite bathroom



SPECIFICATIONS

TRIPP 90



LOA	27.40 m
Bow Sprit Extension	30.00 m
Beam	6.80 m
LWL	25.20 m
Lifting Keel	2.81m - 4.64 m
Displacement (light ship)	approx. 55.00 t
Ballast (liftig keel)	approx. 20.00 t
	bulb 13.80 t
Propulsion	Cummins 305 hp
Hotel Batteries	25 Volt DC, 2,000 Ah
Fuel Tank	approx. 2,200 l
Freshwater Tank	approx. 1,550 l
Greywater Tank	approx. 200 l
Blackwater Tank	approx. 200 l

Brochure not contractual, photos may show options not included in the standard specification, subject to change in design and measures without prior notice and errors accepted, drawings and photos covered by copyright.

Yard Michael Schmidt Yachtbau GmbH

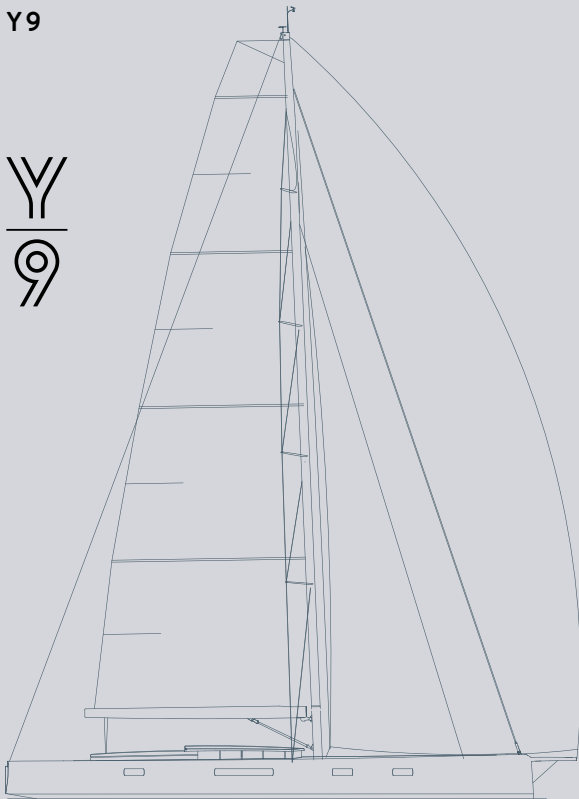
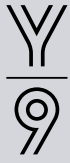
Naval Architect Tripp Design Naval Architecture

Interior Design / Styling Winch Design

Structural Engineering AMS Italia

Classification Hull construction certificate by RINA

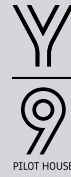
Y9



LOA	27.40 m
Bow Sprit Extension	30.00 m
Beam	6.80 m
LWL	26.04 m
Fixed Keel	4.70 m
Telescopic Keel (optional)	3.20 m - 4.80 m
Fixed Keel (shallow draft)	4.10 m
Displacement (light ship)	approx. 55.00 t
Ballast (fixed)	approx. 18.92 t
	bulb 16.00 t
Ballast (telescopic)	approx. 19.18 t
	bulb 15.00 t
Ballast (fixed, shallow draft)	approx. 19.92 t
	bulb 17.40 t
Propulsion	2x VOLVO D4-175 (129 kW)
Hotel Batteries	24 Volt DC, 1,400 Ah
Fuel Tank	approx. 3,000 l
Freshwater Tank	approx. 2,000 l
Greywater Tank	approx. 250 l
Blackwater Tank	approx. 250 l

Yard Michael Schmidt Yachtbau GmbH
Naval Architect Tripp Design Naval Architecture
Interior Design / Styling Norm Architects
Structural Engineering AMS Italia
Classification Hull construction certificate by RINA.

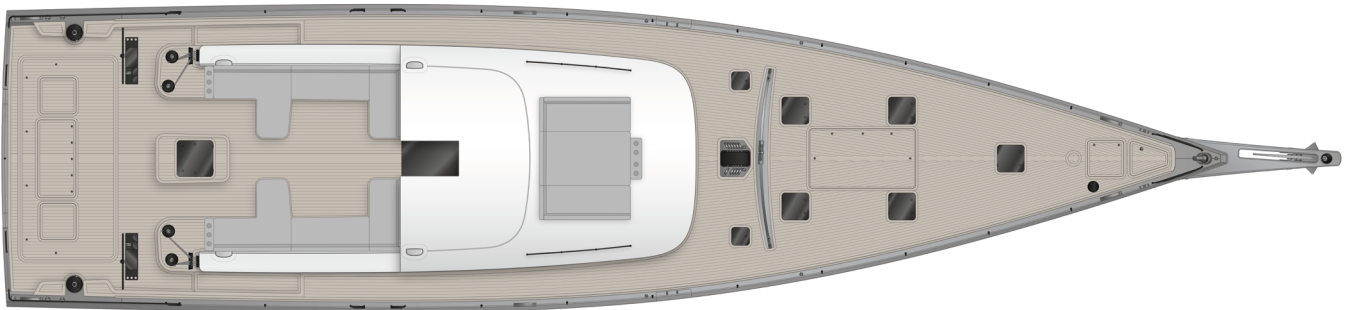
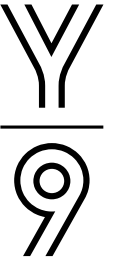
Y9
**PILOT
HOUSE**



LOA	27.40 m
Bow Sprit Extension	30.00 m
Beam	6.80 m
LWL	26.04 m
Fixed Keel	4.70 m
Telescopic Keel (optional)	3.20 m - 4.80 m
Fixed Keel (shallow draft)	4.10 m
Displacement (light ship)	approx. 55.00 t
Ballast (fixed)	approx. 18.92 t
	bulb 16.00 t
Ballast (telescopic)	approx. 19.18 t
	bulb 15.00 t
Ballast (fixed, shallow draft)	approx. 19.92 t
	bulb 17.40 t
Propulsion	2x VOLVO D4-175 (129 kW)
Hotel Batteries	24 Volt DC, 1,400 Ah
Fuel Tank	approx. 3,000 l
Freshwater Tank	approx. 2,000 l
Greywater Tank	approx. 250 l
Blackwater Tank	approx. 250 l

Yard Michael Schmidt Yachtbau GmbH
Naval Architect Tripp Design Naval Architecture
Interior Design / Styling Winch Design
Structural Engineering AMS Italia
Classification Hull construction certificate by RINA.

Y9 PROFILE + DECK PLAN



Let us talk about your ideas.

+52 55 2270 6061 · +52 55 54157974

info@zarpoyachts.com

ZARPO
YACHTING REFINED

www.zarpoyachts.com